

# GLYCOENERGIZER HAIR

## Pure marine energy for the hair

### INCI NAME:

Water, Glycerin, Glycogen

### DOSE OF USE:

3% to 5%

### SOLUBILITY:

Hydro-soluble and soluble in ethanol.

### PRESERVATIVES:

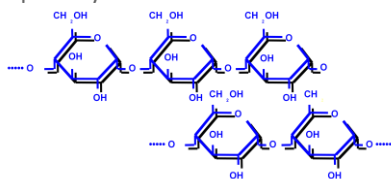
Paraben free

### COSMETIC USE:

- Assures the intense energy needs of the hair follicles in Anagen phase
- It assist rising the oxygen consumption that comes before the mitotic activity of the cells at the hair bulb
- Helps the stimulation of the growth of hair follicles
- It is indicated for the treatment of devitalized, dried and thin hair problems

### DESCRIPTION:

Glucose is the most important sugar at cellular level. It plays a very important role at the energetic metabolism of the cells. **Glycogen is a combination of glucose molecules** and it is one of the main energy sources for the cells activities. At hair level glycogen is present and metabolized in the human hair follicle, especially at the outer root sheath cells.



The outer root sheath forms a non-keratinizing region at the periphery of the follicle and is continuous with the epidermis. Also contains great amounts of glycogen at the lower part of the follicle. **Glycogen is the source of the energy for protein synthesis during hair growth**, and the presence of glycogen in the outer root sheath suggests the existence of an energy-consuming activity in these cells

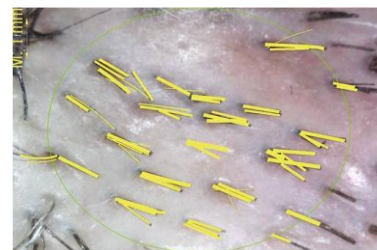
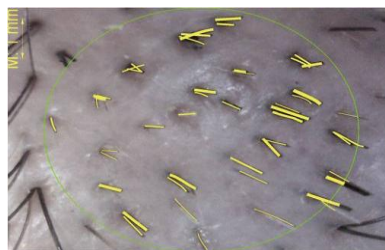
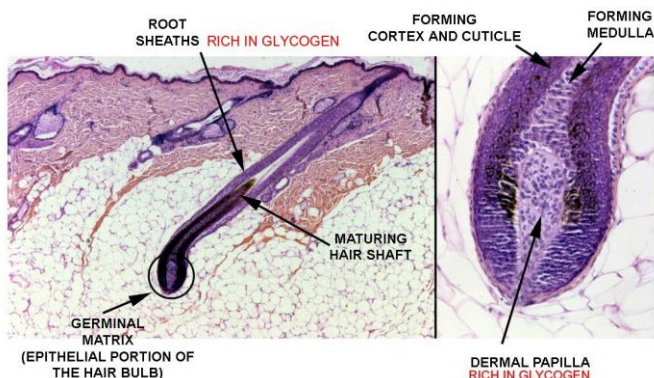
### PROPERTIES:

Histologically, the outer root sheath is noticeable at the base of the bulb as a thin rim of pale cells. Closer to the surface, the cells are larger and columnar, with peripheral palisades. Within the keratogenous zone, the outer root sheath is expanded and stratified and the cells contain abundant glycogen and possess clear cytoplasm. **The store of glycogen in the outer root sheath is utilized for a local supply of energy and materials for bulbar cell activities.**

During the hair's cycle, the amount of glycogen varies depending on the phase of the hair. Growing hair follicles (anagen phase) use glucose twice as fast as those at telogen phase.

**Glycoenergizer hair is a highly purified glycogen** obtained from marine origin. Because its homology with the glycogen of epidermal and hair cells, it assures the availability of energy at the active growth phase of the hair follicle.

Glycoenergizer hair has a **stimulating effect** of the growth of the hair follicle and on the mitoses of bulbar keratinocytes.



N a t u r a l l y   E f f e c t i v e

Ctra. Alpedrete, 6  
28400 Collado Villalba – Madrid – Spain  
E: [info@cobiosa.com](mailto:info@cobiosa.com)  
W: [www.cobiosa.com](http://www.cobiosa.com)

**Cobiosa**  
Industrias Asociadas SL